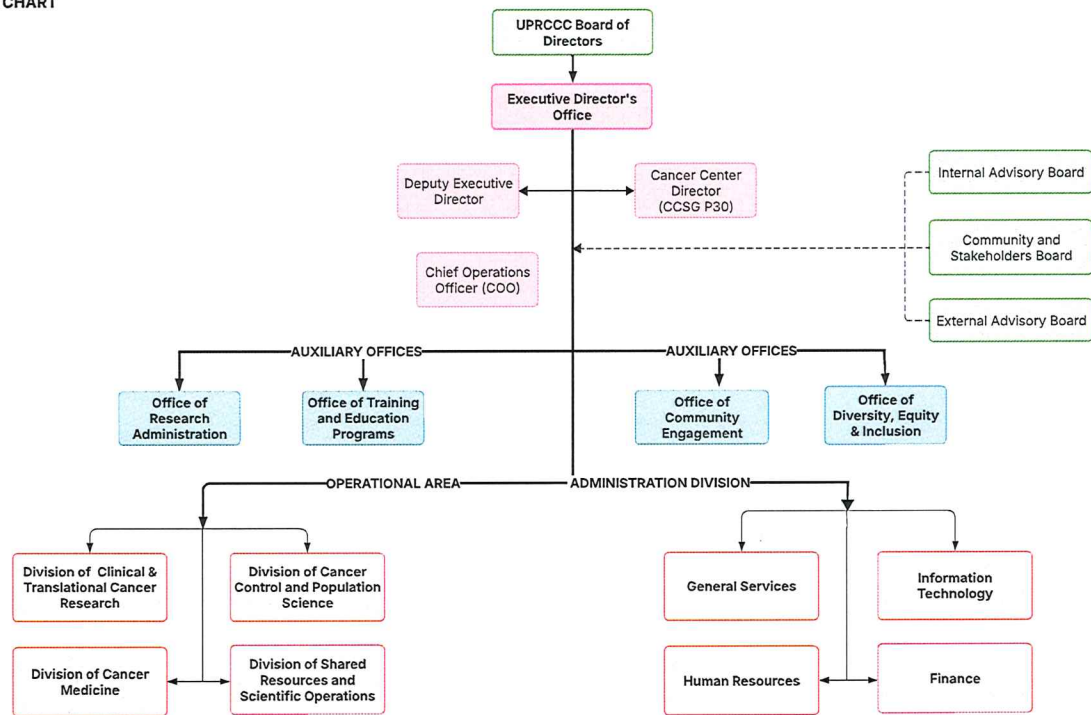


University of Puerto Rico Comprehensive Cancer Center Organizational Charts



CENTRO
COMPRESIVO
DE CÁNCER
DE LA UNIVERSIDAD DE PUERTO RICO
GOBIERNO DE PUERTO RICO

UNIVERSITY OF PUERTO RICO COMPREHENSIVE CANCER CENTER
GENERAL ORGANIZATIONAL CHART



REFERENCES:

- EXTERNAL TO THE UPRCCC
- EXECUTIVE DIRECTION
- OFFICES
- DIVISIONS/DEPARTMENTS

Approved on: 4/27/2026; By:

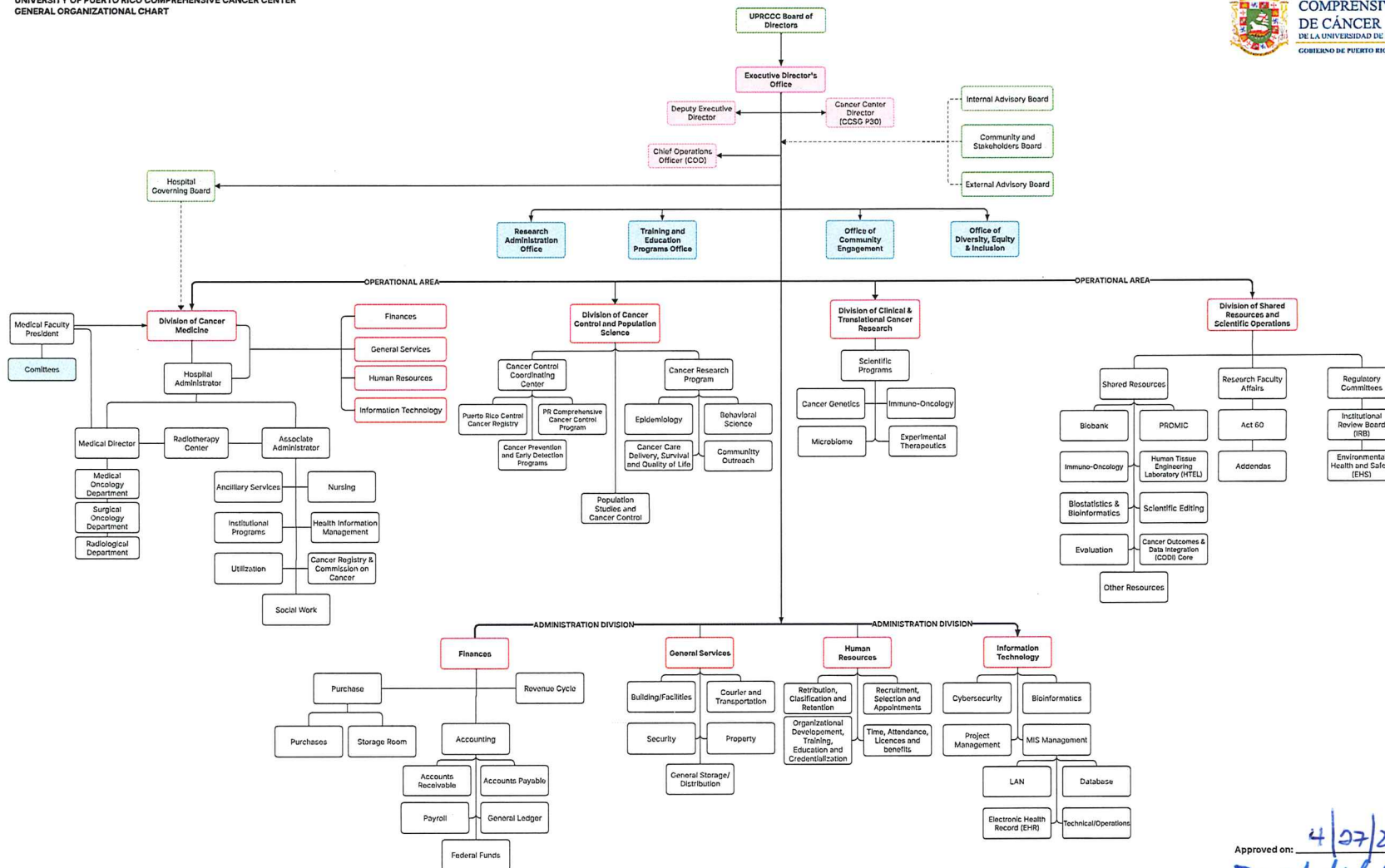
William Méndez Latalladi

Dr. William Méndez Latalladi
Board of Directors President

Elba V. Caraballo Rivera

Dr. Elba V. Caraballo Rivera
Deputy Executive Director

UNIVERSITY OF PUERTO RICO COMPREHENSIVE CANCER CENTER
GENERAL ORGANIZATIONAL CHART



REFERENCES:

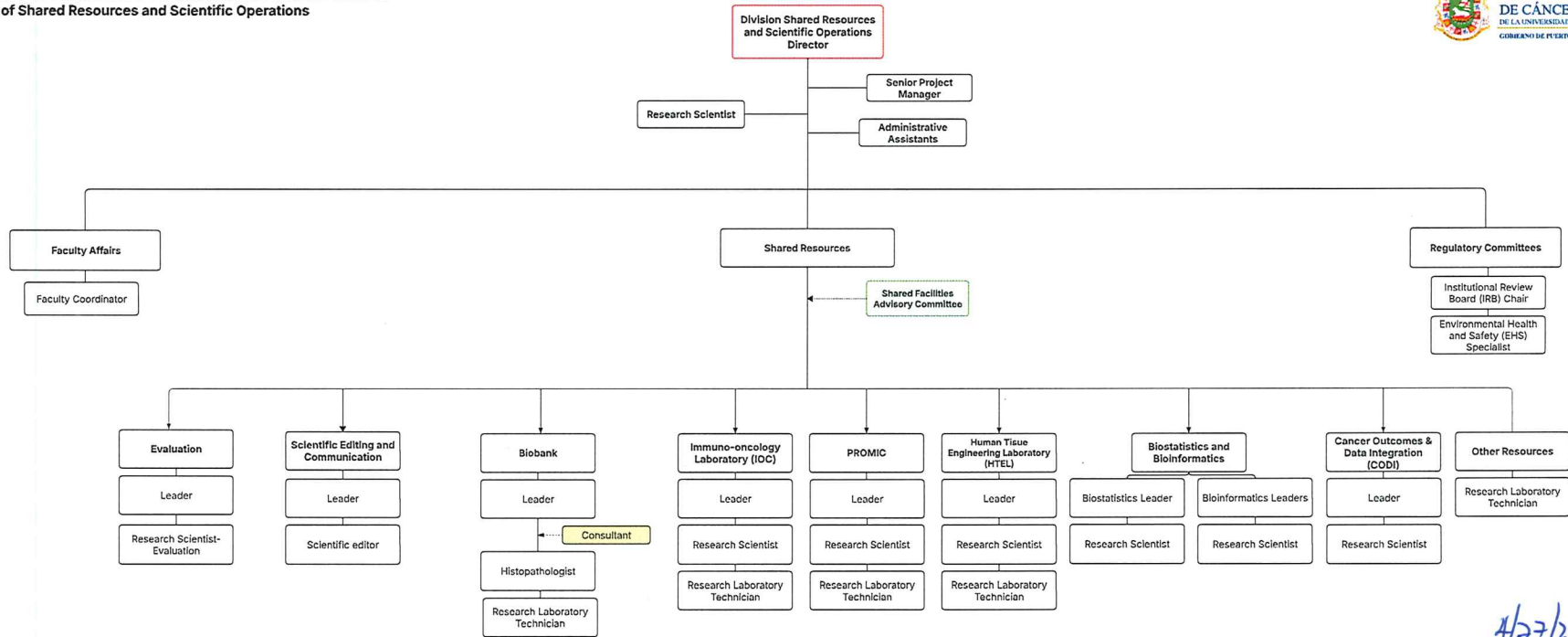
- EXTERNAL TO THE UPRCCC
- EXECUTIVE DIRECTION
- AUXILIARY OFFICES
- DIVISIONS/DEPARTMENTS
- MAJOR SUB-DIVISIONS/DEPARTMENTS
- DEPARTMENTAL OFFICES DIVISION PROGRAMS
- SUB-OFFICES
- COMMITTEE

Approved on: 4/27/2026 By:

William Méndez Latalladi
Dr. William Méndez Latalladi
Board of Directors President

Elba V. Caraballo Rivera
Dr. Elba V. Caraballo Rivera
Deputy Executive Director

UNIVERSITY OF PUERTO RICO COMPREHENSIVE CANCER CENTER
Division of Shared Resources and Scientific Operations



REFERENCES:

- DIRECTOR
- MAJOR AREAS
- AREAS
- PERSONNEL
- COMMITTEE
- CONSULTANTS

Approved on: 4/27/2026; By:

William Méndez Latalladi
Dr. William Méndez Latalladi
Board of Directors President

Elba V. Caraballo Rivera
Dr. Elba V. Caraballo Rivera
Deputy Executive Director